

# Rural Pact Conference

15-16 June 2022





# Welcome and introduction

Ms. Maria GAFO GOMEZ-ZAMALLA,  
Deputy Head of Unit, Directorate General for Agriculture and Rural Development,  
European Commission



# SHARE project

## Policy Brief on Building Inclusive Territories

### Cepaim Foundation

Adolfo Patón Monge.

European Unit / Office of the General Manager.

Ph: 0034 697 717 364

[adolfopaton@cepaim.org](mailto:adolfopaton@cepaim.org)



Six key elements to driving the successful adaptation and improvement of welcome and integration at a local, regional, national and EU-wide level.

1. Multi-level governance.
2. Multistakeholder approach.
3. Capacity-building.
4. From the ground up.
5. Place-based approaches.
6. Participatory strategy.

# Share / SIRA project:

The European partnership:



Co-funded by AMIF, SIRA initiative uses participatory approaches and pilot actions, involving both the local communities and newcomers to improve and strengthen social orientation and integration in 10 rural areas across France, Greece, Poland, and Spain.

# Share / SIRA project:

## Objectives:

- ✓ Create and facilitate regional multi-stakeholder cooperation platforms to assess, implement and strengthen inclusive territorial approaches for integration
- ✓ Pilot and evaluate new approaches to support the social orientation of newly arrived migrants and refugees, involving local communities and the participation of newcomers
- ✓ Local, regional, national and European stakeholders share best practices on integration, along with tools, resources and capacity building activities.

# Share / SIRA project:

## Main positive impacts, so far:

### For Cepaim Foundation:

- ✓ It motivates us to adopt new methodologies for social change in the projects we already develop in rural areas.
- ✓ It makes it easier for us to unite and better structure the projects we develop in the European framework:
  - Welcoming Spaces. Investing in 'Welcoming spaces' in Europe: successful examples of hosting non-EU migrants as a solution for shrinking areas.

It seeks to bring to light existing initiatives that ensure the integration of immigrants in rural areas in countries such as Italy, Spain, Germany, Holland and Poland.
  - Yuri. Intercultural Urban-Rural Youth Dialogues for Collective Entrepreneurship.

Seeks to promote inclusion and diversity by ensuring the participation of young people with fewer opportunities.
- ✓ It leads us to promote contacts between the partnerships of these initiatives, opening multiple windows of opportunity and synergies.



# Share / SIRA project:

## Main positive impacts, so far:

### For the refugees and immigrants we work with:

- ✓ Experimentation spaces from pilot projects are a springboard for intercultural coexistence in local everyday life.
- ✓ The host society and the people who arrive begin to consider themselves as equals: Sira leads both sides to start to abandon the concept of a utilitarian relationship.



# Share / SIRA project:

## Main positive impacts, so far:

### For depopulated rural areas / shrinking villages:

- ✓ Boosts experimentation in the territory through pilot projects.
- ✓ Strengthens the associative fabric and organizations that work for social cohesion and the management of cultural diversity.
- ✓ It brings new opportunities (sometimes remote and improbable) for people living in the villages and for refugees and migrants arriving.
- ✓ New processes in the narrative and in the ideological imaginary: it questions who and how the narrative about the rural and about migrants and refugees is articulated. This questioning leads to productive conflicts.

# Share / SIRA project:

## Main positive impacts, so far:

### For local and national policies of demographic challenge and cultural diversity management:

- ✓ Sira is an accurate tool to test whether country and regional policies really work in practice: strategies against depopulation and for the demographic challenge; strategies for refugees and international protection; migration policies; laws; etc.  
Do they really work in practice?  
Do they fit the circumstances of the people and the needs of the territories?

# Share / SIRA project:

## Main positive impacts, so far:

For policies on demographic challenge; asylum and international protection; migration; and more:

- ✓ Practical experiences; processes initiated; good practices promoted; individual and group testimonies; objective data collected; etc., make:
  - Share / Sira a transferable at European level, with the necessary adaptations to each territory and with an essential follow-up.
  - Share / Sira is an influential proposal in European-level policies and, by transposition, in country policies.



# Thank you



# Tackling medical Deserts in rural Areas

Boosting Collaboration between Actors on basis of Citizens' Needs

*Some examples from mutuals*

*Jessica Carreño Louro*

*Project Manager*

*Association Internationale de la Mutualité  
(AIM)*



Rural Pact Conference

15-16 June 2022





# What is AIM

## What is a mutual?

### ***What's AIM?***

- 54 members from 28 countries in Latin-America, Africa and Europe
- Healthcare payers: statutory health funds and 'mutuals'

### ***What's a mutual?***

- Our specificities: not-for-profit + democratic governance + solidarity
- Our objectives: guarantee universal access to healthcare and LTC but also social services, with a broad understanding of health and looking at all its determinants



# Why are we here?

Medical deserts, a growing issue, including for rural areas

## *Is it really a problem?*

- European Commission report on Demographic change confirms it
- Rising demand for care and long-term care due to ageing

## *Good news!*

- Action can be taken (see also [our position paper](#)); we all have a role to play
- Some examples from our members:
  - Achieving more integrated and collaborative care models
  - Developing innovative solutions
  - Tackling workforce problems
  - Collaborating across borders
  - Supporting social economy actors



## Solidarity Proximity Counters – FIMIV Italy

### Observation/needs:

Profound changes in society; social protection systems incapable of responding adequately to new risks

- need a new proximity welfare model that is inclusive and capable of understanding difficulties and answering needs in a comprehensive and integrated manner

### Proposal:

- create a physical, virtual and itinerant location, where community operators can orient and support the applicant to make use of the services offered by mutuals and other public and private organisations operating in the territory in various fields (social, welfare, health, work, etc.).
- facilitate the procedures for accessing them and help those in difficulty and in more fragile conditions to find solutions to their problems.
- develop services close that answer the needs of people (eg brain labs)

- participate in the emergence of **coordinated practice structures** in conjunction with the regional health agencies (ARS) and health insurance and design prevention actions like therapeutic education programmes, dietician/psychologist packages, family health education for young people and families...
- establish of **local health contracts** to reduce territorial and social inequalities in health and to implement solutions for local health provision
- support the **installation of health professionals in rural areas** – Educ'Tour Programme





## A bus for dental care— FNMF - France

### Observation/needs:

Imbalance in the distribution of dentists across the country which causes difficulties in access to dental care

### Proposal:

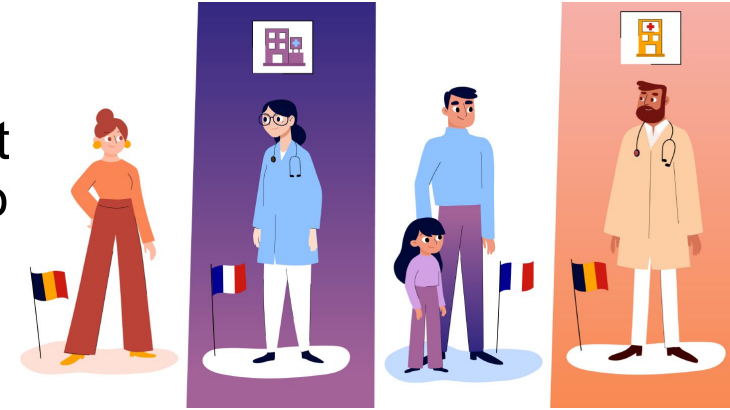
- facilitate access to oral health care for people with ageing disabilities in the north of the department of Landes, which is affected by low medical demography
- two dentists provided dental services in a specially equipped bus, five days a week, for nine nursing homes (EHPADs) and six town centres as close as possible to the people concerned
- during the health crisis, the bus was first adapted to focus on emergency care, then transformed into a mobile vaccination centre in 2021



## InTerESanT – Cross-border Care – MC - Belgium

### Observation/needs:

Need to improve health care conditions for people living on both sides of the Franco-Belgian border, who are often far from a satisfactory health care on their territory



### Proposal:

- study patient flows, the nature and financial volume of the care sought in the establishments at border regions and survey the needs, existing hospital medical provision and possible medical cooperation along the border, in order to consider new cooperation.
- ensure the harmonisation of tools, practices and procedures, and deploy an online portal along the border
- provide the population and health professionals with a website containing the information they need to know, including an interactive map of the zones and establishments concerned
- study possible improvements to the current system and the possible development of new projects or tools in one or more cross-border pilot territories.



# Thank you





# Healthacross initiative

Making cross-border healthcare happen.

*Insights from Lower Austria*

*Julia Winkler MA*

*Project Manager @ Healthacross initiative*

*Health Agency of Lower Austria*



# Lower Austria

Where are we?



# Health Agency of Lower Austria

## Cross-border healthcare - why do we care?

- Umbrella organization for all 27 hospitals and 50 nursing/disabled care centers
- Institution under public law with legal personality
- Hospitals and care centers are 100 per cent owned by Lower Austria
- roughly 27.000 employees (biggest employer in the region)
- ❑ 414 km internal border to Czechia, Slovakia and in close proximity Hungary

***“equal access to quality healthcare services close to home”***







# Healthacross for Future

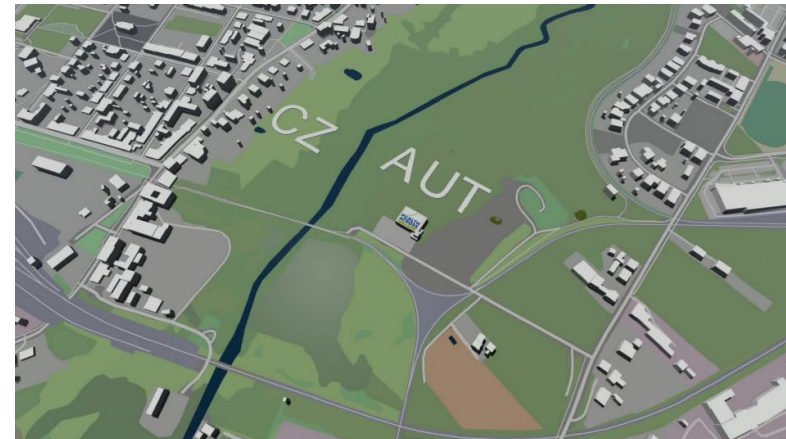
## Lower Austria / South Bohemia

‘Devided city’ of Gmünd/České Velenice



### 2 Pillars

- Cross-border healthcare in the hospital of Gmünd ☐ in- & outpatient treatment
- Cross-border primary healthcare centre ☐ analysis, planning & approval



# Primary Healthcare Centre Gmünd

Financed via Austrian Rural Development Programme 2014 to 2020



„Healthacross Med Gmünd“



# Healthacross initiative

## Objectives

- ✓ Improve the quality of life for citizens living in border regions
- ✓ Equal access to healthcare services close to home
- ✓ Positive regional economic effects

## How?

- Implementing innovative projects
- Active member of European / International Health Networks







# Cross-border healthcare

## Food for thought

Border areas are home of 30% of the European population - 150 million citizens respectively.

The EU with its immediate neighbours from the EFTA Association counts 40 internal land borders.

Differences in legislation: In federal EU MS regions are responsible for managing and organizing healthcare systems.

**«Wish it, dream it, do it!»**





Thank you



# Time for your voices





# How can we contribute to the Rural Pact?



Rural Pact Conference

15-16 June 2022



# Conversations in small groups

1. Introduce each other and share any activities you already have related to the session topic
2. Exchange ideas and take notes on the Template

# Template

Rural Pact Conference, 15-16 June 2022

## How can we contribute to the Rural Pact?

Session topic: \_\_\_\_\_

Participants:

### Key Ideas:

What new ideas emerged from the presentations? What key ideas can you share from your own context?

### Opportunities for collaboration:

What opportunities for collaboration do you see?

### Concrete actions (name, organisation, action)\*:

What concrete actions are you willing to take to contribute to the Rural Pact?





# Don't forget to submit a commitment!

Rural Pact Conference 15-16 June 2022

## COMMITMENT CANVAS

What concrete actions am I / is my organisation willing to take to contribute to the Rural Pact?

*Please fill out one canvas for each commitment you are willing to submit*

|  |                 |
|--|-----------------|
| <b>This is:</b> <input type="checkbox"/> An idea for a commitment / <input type="checkbox"/> A formal commitment   |                 |
| <b>Name:</b><br><b>Name of organisation:</b><br><b>Sector/type of organisation:</b>  |                 |
| <b>Contact email:</b>  | <b>Country:</b> |
| Are you a member of the Rural Pact Community? <input type="checkbox"/> Yes / <input type="checkbox"/> No   |                 |
| <b>Description of the commitment:</b>  |                 |
| <b>Key milestones you are planning:</b>  |                 |
| <b>Which objective does the commitment contribute to?</b><br><input type="checkbox"/> Amplify rural voices <input type="checkbox"/> Networking & collaboration <input type="checkbox"/> Acting for rural areas |                 |



# **“Harvesting” from our conversations**

- 1) What new ideas emerged from our conversations?
- 2) What opportunities for collaboration came to life that would contribute to the Rural Pact?

# “Harvesting” from our conversations

Go to:  
**SLI.DO #ORCHARD**



**Rural Pact Conference**

15-16 June 2022

